

Organizing for T-Trak

Bruce DeMaeyer

NMRA-MCR-Division 10

Eastgate, Ohio

November 11, 2018

What is T-Trak

- A simple way to start into Model Railroading
- Uses module 2 $\frac{3}{4}$ " tall
- Straight modules in multiples of a foot
- Corner modules
- Electrical and mechanical interfaces between modules

What is T-Trak

- Easy to Build
- Easy to store
- Easy to transport
- Snap together
- A logical “next step” in model railroading

Why should we be interested

- Huge opportunity to grow the NMRA membership in our divisions
- Activity directed at younger members
- Continuing education in model building
- Optimized for use at train shows

Growth Market

- Today's younger modelers want to model trains but do not have room for a layout
- Modules give them the ability to build a temporary layout at home
- Portability allows them to join others in a group layout
- Win-Win

Continuing Education in Modeling

- Diorama sized modeling
- Lets us focus on a single industry or scene
- Minimizes the industry trackage, maximizes the scenery
- Can easily be built in less than a month

Size Optimization

- Optimized for train shows and low cost
- Sized to fit a 30" x 6' conference table
- No longer need bulky supporting under-structure
- Can easily transport many modules in a SUV

Limited Standards

- Single module Track Length 310mm 12.2"
- Single module Length 308mm 12.125"
- Maximum module Depth 355mm 14"
- Height (all modules) 70-100mm 2.75" - 4"
- Outer Line Track Offset 38mm 1.5"
- Electrical Connections BWWB
- Electrical Connector Kato 24-818 Unijoiner

Limited Standards

- Modules are sized in multiples of a foot.
- Allows for easy assembly and tear down
- Several modules can be transported in an SUV

Limited Mechanical Standards

- Uses two code 80 main tracks using Kato Unitrack precisely spaced on the two edges of the wooden module.
- Unijoiners connect the rails between the modules. Hard snap when connected.

Kato Terminal UniJoiner 35"



Limited Electrical Standards

- Kato wiring connectors have a blue/white cable for the drops
- Early decision to use BW-WB on the two mains
- Allowed DC trains to be run bi-directionally on the layout
- Uses a Kato 24-818 Terminal Unijoiner (35" long drop wire) bought out the bottom of the module.
- Division 10 maintains this standard as do most groups but we run the layout as full DCC and we accommodate the DCC track wiring with a specially-built bus cable.

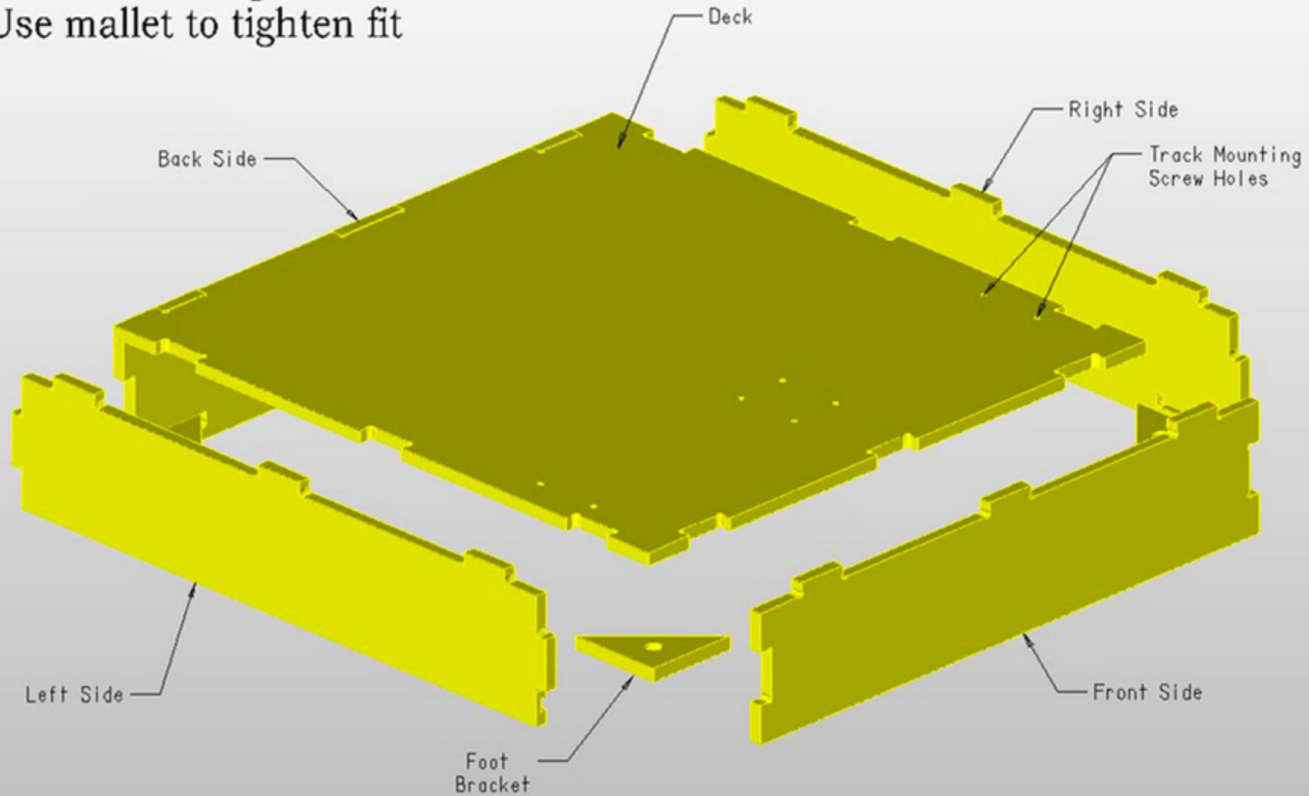
Module Construction

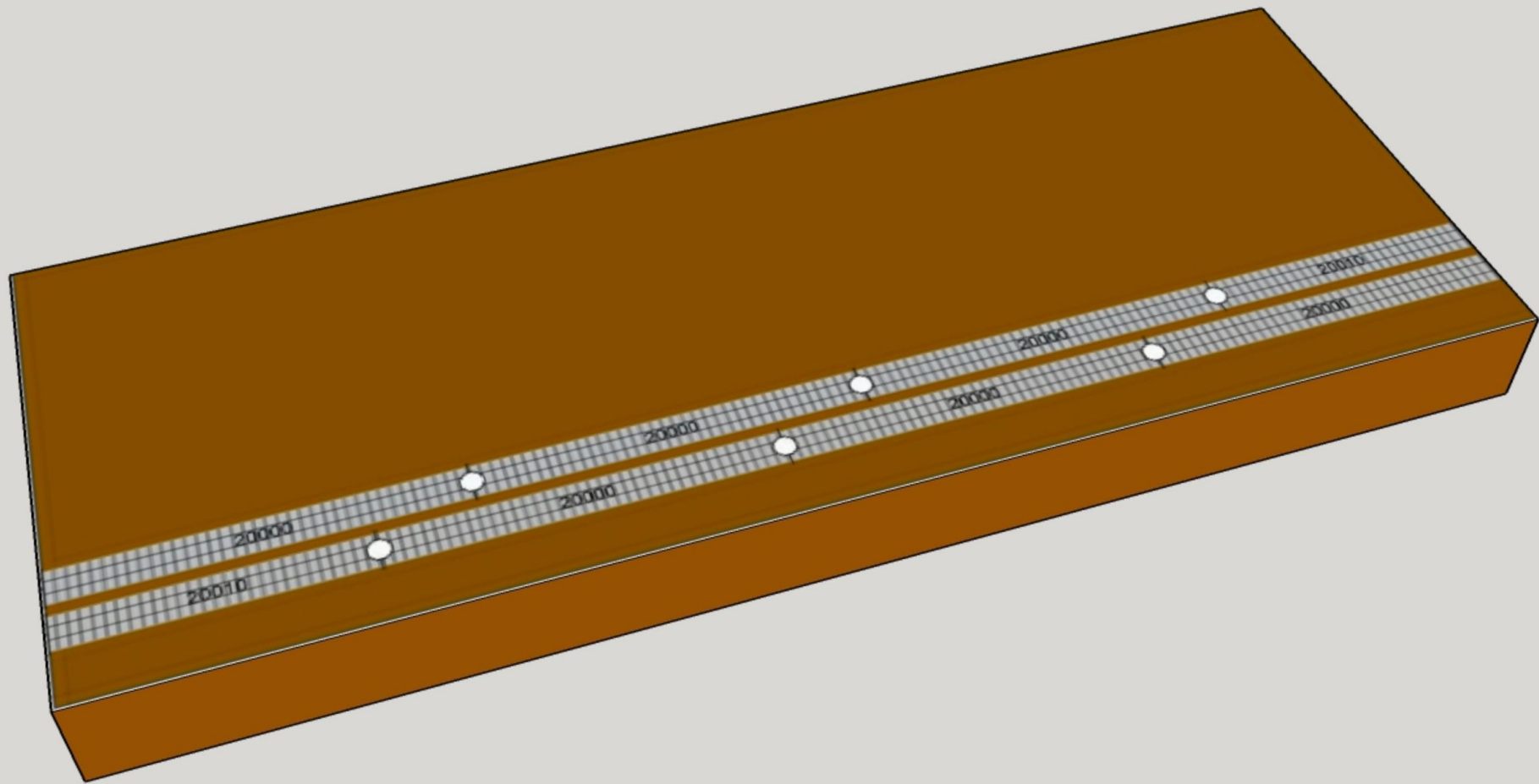
- Typical $\frac{1}{4}$ " wood sides and one $\frac{1}{4}$ " top or bottom
 - Plywood Top
 - Poly-Foam Top
- A 2mm separation between modules is built into the design, The single module is 308mm and the track length is 310mm. This provides the wiggle room to assure a tight fit between modules and a “snap” at connection.
- Modules are separated using a 1 $\frac{1}{2}$ " putty knife

Module Construction

Assembly Instructions

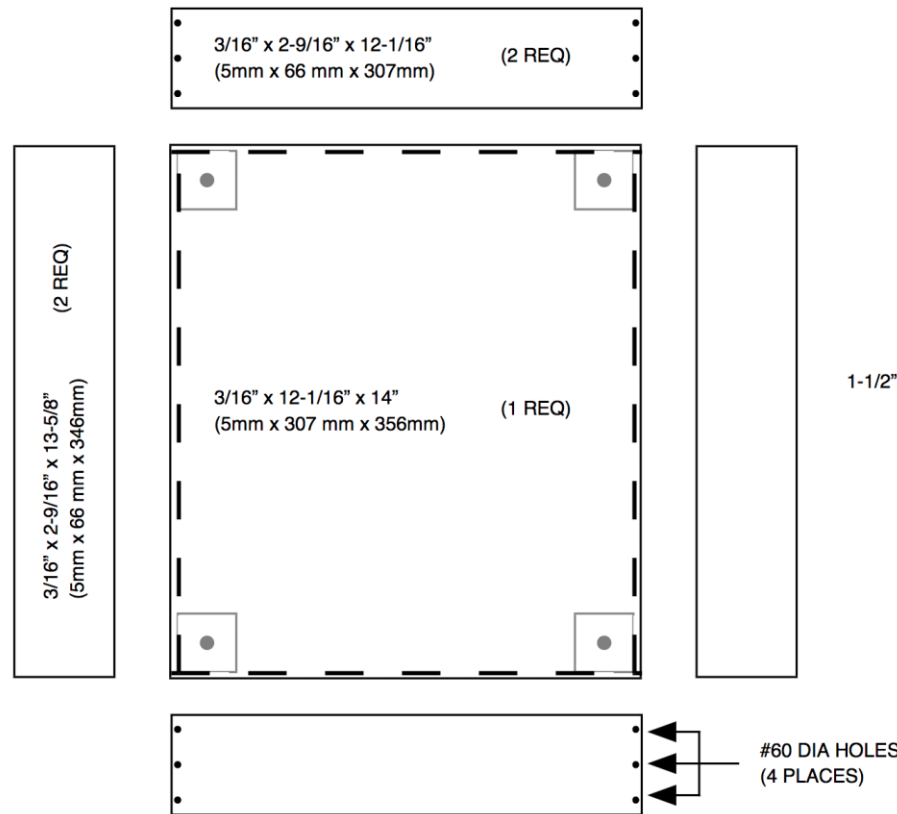
1. Paint mating surfaces with glue
2. Press Pieces together as shown
3. Use mallet to tighten fit





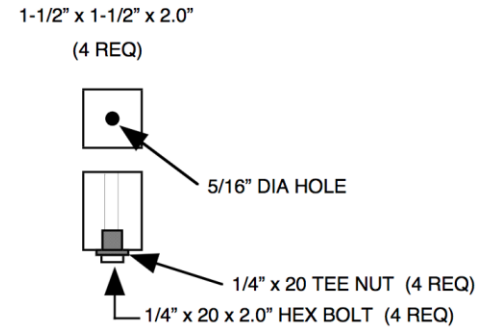
Module Construction

SINGLE MODULE



MATERIAL LIST (3/16" LUAN SHEET)

DESCRIPTION	QTY	DIMENSIONS
TOP	(1 PCS)	12-1/16" x 14"
FRONT/BACK	(2 PCS)	2-9/16" x 12-1/16"
SIDES	(2 PCS)	2-9/16" x 13-5/8"
LEGS	(4 PCS)	1-1/2" x 1-1/2" x 2"
T-NUT	(4 PCS)	1/4" x 20 T-Nut
HEX BOLT	(4 PCS)	1/4" x 20 x 2.0" Hex Bolt (threaded full length)



Power Toolbox

- We built a Power Toolbox using Digitrax DCC elements and we provide simplex and duplex radio throttle connectivity as well as a wi-fi interface for smartphone throttles.
- If we run DC on any section of our layout the track has to be isolated and a separate DC power supply and power bus must be used.

Power Toolbox



Resources

- Check our Division 10 T-Trak webpage
- Facebook T-TRAK Group
- t-trak.org (“Official Site”)
- <http://t-trakhandbook.com/>
- <http://ttrak.wikidot.com/>
- <http://www.katousa.com/>
- <http://www.masterpiecemodules.com/>

What's happening in the MCR

- The BOD has passed motions to bring T-Trak modules and module judging to the annual conventions
- The emphasis is on members building modules, really good modules
- Attendees can bring their modules to the MCR annual conventions and incorporate them into the mix of the convention. Fun experience, think operating sessions

What's happening in the MCR

- Attendees will be participating in a region wide group layout and can submit them into the contest. 1st, 2nd, and 3rd place, Peoples Choice, Merit Awards
- This also gives the Divisions an opportunity to use their modules to invite others in their area to bring their modules to division train shows.
- Many of these guests are likely to be non-members of the NMRA.

What's happening in the MCR

- We can use our emphasis on T-Trak to attract independent modelers in our region to join our divisions
- Our modules set the tone for others to use to achieve better skills
- Emphasizing T-Trak at our train shows and our regional convention

What's happening in the MCR

- New prospective module builders can join the NMRA with a rail pass
- Current members mentor the new member in building a really nice module
- All of these elements demonstrates the value brought by the NMRA to the non-member
- We can use this tool to advance younger persons into NMRA membership.

Convention Trial Run

The Bullet - 2019 MCR Convention-May 2-5, 2019

- Dedicated T-Trak module room in the hotel. Room for 55 double modules
- N-Trak, Free-MO, et al, invited by the Convention Division (1)
- Call for T-Trak modules in fall of this year, repeated in January Kingpin, and followed up all the way to the Convention.
- You or a new member can have a module entered by another member as a proxy
- We will be formally judging modules and awarding the usual place award, merit awards and Peoples Choice Awards.

How to Organize your Division for T-Trak Modules

- Division Special Interest Groups (SIG)
 - Incorporate into existing 100% club
 - Add into a modular group
- Someone has to become the Division 7 T-Trak coordinator. That person will be included into the Region T-Trak Committee
- Division Leaders should be involved in the initial module build

Remember the Objectives

- It's not N-Scale, it is modeling. Some of our best modules were built by O and On30 modelers. Learn some new things.
- It is all about finding new members
- Bring your modules to the convention

Build them and they will come

Thanks for Listening

- Any Questions?